

GENERAL NOTES

1. GENERAL CONDITIONS, SUPPLEMENTARY GENERAL CONDITIONS AND OTHER REQUIREMENTS OF DIVISION 1, AS WELL AS, THE ELECTRICAL, AUDIO VISUAL, AND SECURITY PLANS AND SPECIFICATIONS, MAY APPLY TO THE WORK SPECIFIED.
2. PROVIDE ALL MATERIALS, COMPONENTS, TOOLS, AND LABOR TO COMPLETE A TELECOMMUNICATIONS INFRASTRUCTURE AS SHOWN IN THE STRUCTURED CABLING SYSTEM DOCUMENTS, CONTRACTS AND DRAWINGS.
3. CAREFULLY EXAMINE THE SITE TO DETERMINE THE EXTENT OF WORK AND CONDITION UNDER WHICH IT WILL BE DONE.
4. REVIEW AND VERIFY CONTRACT DOCUMENTS IN RELATION TO FIELD CONDITIONS TO VERIFY ACCURACY, CONFIRMING WITH OWNER, OR THEIR DESIGNATED REPRESENTATIVE, THAT RELATED WORK HAS BEEN COMPLETED PRIOR TO PROCEEDING WITH INSTALLATION.
5. BRING DISCREPANCIES BETWEEN DESIGN DOCUMENTS AND ACTUAL FIELD CONDITIONS TO THE IMMEDIATE ATTENTION OF OWNER, OR THEIR DESIGNATED REPRESENTATIVE FOR CLARIFICATION.
6. REFER TO TECHNOLOGY, AUDIO VISUAL AND SECURITY CONTRACT DOCUMENTS, DRAWINGS AND SPECIFICATIONS AS A WHOLE IN THE BIDDING AND INSTALLATION OF THIS PROJECT.
7. NOTE AND REPORT TO GC, IF THE COMMUNICATION SYSTEM PATHWAY DO NOT COMPLY WITH COMMUNICATIONS SPECIFICATIONS AND DRAWINGS PRIOR TO INSTALLING CABLE.
8. TAKE NECESSARY MEANS TO ASSURE COMMUNICATION SYSTEM COMPONENTS ARE PROTECTED FROM MECHANICAL DAMAGE BEFORE, DURING AND AFTER CONSTRUCTION.
9. REFERENCE DIVISION 27 SPECIFICATIONS FOR ITEMIZED PRICING REQUIREMENTS.
10. ALL COMPONENTS AND DEVICES SHOWN ON THESE DRAWINGS ARE FOR APPROXIMATE LOCATION AND POSITIONING ONLY. VERIFY EXACT LOCATIONS WITH THE OWNER OR G.C. PRIOR TO INSTALLATION.
11. ADHERE TO ALL TELECOMMUNICATIONS CABLING STANDARDS SET FOURTH IN THE ANSI-TIA 568-C STANDARDS.

COMMUNICATIONS ROOMS

1. RACK ELEVATIONS AND NETWORK EQUIPMENT ARE SHOWN FOR COORDINATION AND INFORMATIONAL PURPOSES ONLY.
2. INSTALL 8'H X 4'W X ¾" T GRADE ACX PAINTED FIRE RATED PLYWOOD ON DESIGNATED WALLS OF THE TELECOM ROOMS. PLYWOOD SHALL BE PAINTED TWO COATS OF FIRE RETARDANT WHITE PAINT, LEAVING FIRE RATED STAMP EXPOSED.
3. GRAPHIC REPRESENTATION OF PATCH PANELS AND TERMINAL BLOCKS DO NOT REPRESENT EXACT QUANTITIES. CONTRACTOR SHALL PROVIDE SUFFICIENT QUANTITIES FOR ALL CABLING, PLUS 25%.
4. FURNISH AND INSTALL VELCRO CABLE SUPPORT, CABLE MANAGEMENT AND ASSOCIATED HARDWARE WITHIN TELECOMMUNICATIONS ROOMS.
5. PROVIDE FLOOR PLAN AS-BUILT ON "D" SIZE PAPER, LAMINATED WITH PLASTIC AND MOUNTED BEHIND CUT PLEXI-GLASS ON THE WALL IN EACH TELECOM ROOM. REFERENCE TELECOM ROOM ELEVATIONS FOR AS-BUILT PLACEMENT.

ELECTRICAL

1. FOR SPECIFIC POWER AND RECEPTACLE REQUIREMENTS IN THE PROJECT REFERENCE ELECTRICAL SPECIFICATIONS AND DRAWINGS AND VERIFY WITH COMMUNICATION SPECIFICATIONS AND DRAWINGS. REPORT TO GC DISCREPANCIES PRIOR TO PURCHASE OR INSTALLATION.
2. ELECTRICAL CONTRACTOR SHALL INSTALL NORMAL AND GENERATOR BACK-UP POWER AS REQUIRED

GROUNDING AND BONDING

1. BOND ALL METAL RACKS, FRAMES, CABINETS AND MISCELLANEOUS EQUIPMENT ENCLOSURES TOGETHER USING GREEN INSULATED COPPER WIRE SO THAT ALL EQUIPMENT AND STRUCTURED CABLING RACKS ARE AT THE SAME GROUND POTENTIAL. A VOLT-O-METER (VOM) MEASUREMENT BETWEEN ANY TWO POINTS ON METAL RACKS AND EQUIPMENT ENCLOSURES IN THE TELECOMMUNICATIONS ROOMS SHALL BE LESS THAN 1.25 VOLTS DC OR AC POTENTIAL.
2. BOND TOGETHER ALL GROUNDS TO FORM A SINGLE GROUNDING ELECTRODE SYSTEM AS REQUIRED IN ARTICLE 250 OF NFPA 70 - NATIONAL ELECTRICAL CODE.
3. PREPARE SURFACES TO PROVIDE A PROPER PATH TO GROUND. ANY SURFACE TO BE GROUNDED MUST BE FREE OF PAINT OR OTHER COATING THAT MIGHT PREVENT AN EFFECTIVE GROUND. PAINT SHOULD BE SCRAPED AWAY UNTIL METALLIC SURFACE HAS BEEN EXPOSED BEFORE THE ATTACHMENT OF GROUNDING OR BONDING WIRE.
4. INSTALL MANUFACTURER PROVIDED STAR WASHERS PER PANEL INSTALLED IN ORDER FOR PANELS TO BE BONDED TO RACK. ONLY ONE (1) STAR WASHER IS REQUIRED PER PANEL.
5. ADHERE TO ALL GROUNDING AND BONDING REQUIREMENTS SET FOURTH IN THE ANSI-J-STD-607-D COMMERCIAL GROUNDING AND BONDING STANDARDS.

COMMUNICATIONS CABLE

1. CABLING CONTRACTOR MUST BE A CERTIFIED INSTALLER AND BE ABLE TO PROVIDE MANUFACTURER WARRANTY.
2. TERMINATE ALL CATEGORY JACK INSERTS TO 568-B WIRING SCHEME.
3. HORIZONTAL DATA CABLING SHALL CONSIST OF PLENUM 4PR UTP CABLES TO EACH DATA OUTLET. REFER TO 271500 SPECIFICATION SECTION FOR CABLE AND OUTLET TYPE.
4. WIRELESS OUTLET LOCATIONS SHALL CONSIST OF ONE (1) PLENUM 4PR UTP CABLE TO EACH ACCESS POINT. REFER TO 271500 SPECIFICATION SECTION FOR CABLE AND OUTLET TYPE.
5. NO HORIZONTAL CABLE SHALL BE LONGER THAN 100 METERS. IF THE CONTRACTOR BELIEVES ANY STATION CABLE WILL EXCEED THE 100 METERS (295 FEET) LIMIT WRITTEN APPROVAL FROM THE OWNER'S ARCHITECT/ENGINEER WILL BE REQUIRED PRIOR TO INSTALLATION.
6. TERMINATE HORIZONTAL DATA CABLING ON RACK MOUNTED PATCH PANELS, LOCATED IN TELECOM ROOM, AND ON JACK INSERTS AT THE OUTLET.
7. PROVIDE LACING BARS TO RESTRAIN CABLES AND TO PREVENT STRAINING CONNECTIONS.
8. COMMUNICATIONS CABLE SHALL NOT BE PAINTED.
9. PROVIDE ALL NECESSARY MEANS TO PROTECT ALL DATA/VOICE/FIBER CABLING AND JACKS/PORTS FROM MECHANICAL DAMAGE AND DUST DURING CONSTRUCTION. PROVIDE PAINTERS TAPE OVER PATCH PANEL PORTS, CAPS ON FIBER BULK HEADS AND BAG OUTLET JACK INSERT TERMINATIONS DURING CONSTRUCTION TO MINIMIZE DUST ON CONTACTS.
10. PROVIDE SELF-ADHESIVE VINYL OR VINYL-CLOTH WRAPAROUND TAPE MARKERS. MACHINE PRINTED WITH ALPHA NUMERIC CABLE DESIGNATIONS PER ANSI/TIA-607B STANDARDS WITH APPROVAL FROM OWNER IT.
11. PROVIDE PROPER RATED CABLE TYPE PER INSTALLATION TYPE: OSP, RISER OR PLENUM.
12. ALL CABLING INSTALLED UNDERGROUND IN CONCRETE SLABS, IN DIRECT CONTACT WITH THE EARTH, LOCATIONS SUBJECT TO SATURATION WITH LIQUIDS AND UNPROTECTED LOCATIONS EXPOSED TO WEATHER SHALL BE CONSTRUCTED WITH APPROPRIATE WEATHER PROOFING COMPOUNDS AND SHEATHING. PROVIDE INDOOR / OUTDOOR CABLING FOR FIBER OPTIC CABLING EXITING THE BUILDING
13. PROVIDE TWO CATEGORY UTP PATCH CABLES, FOR EACH DATA OUTLET.
14. CONNECT WIRING IN A STRAIGHT PATTERN (NOT TURNED OVER) FROM ORIGINATION TO TERMINATION POINT. CABLE PAIRS SHALL BE ZIP TIED AND EACH CABLE LABELED ON THE BACK OF EACH PATCH PANEL.
15. TWISTED PAIRS MUST REMAIN TWISTED TO WITHIN 1/4" OF CONNECTOR. THIS IS REQUIRED FOR HIGH-SPEED DATA NETWORKS.
16. DO NOT INSTALL WIRING NEAR FLUORESCENT LIGHTING, HIGH-VOLTAGE SOURCES, ELECTRICAL MOTORS, OR OTHER SOURCES OF INTERFERENCE, REFERENCE SPECIFICATIONS FOR SEPARATION REQUIREMENTS.
17. SPLICES WITHIN HORIZONTAL CABLE RUNS ARE NOT ACCEPTABLE.
18. ALL CABLES BEING RUN FOR HORIZONTAL DISTRIBUTION WITHIN THE PLENUM AREAS MUST BE BUNDLED TOGETHER NEATLY AND UNTANGLED, WITH CABLE TIES EVERY 12 FEET. CABLING SHALL LIE FLAT WITHIN AND BE SUPPORTED BY CABLE TRAYS, AND/OR STRUCTURES ATTACHED DIRECTLY TO THE BUILDING STRUCTURE/UPPER DECKING IN THE PLENUM AREAS OR CRAWL SPACES.
19. ADHERE TO MANUFACTURERS' REQUIREMENTS FOR BENDING RADIUS AND PULLING TENSIONS FOR ALL CABLE RUN
20. OUTLET FACEPLATES MUST BE LABELED WITH THE JACK NUMBERS OF PATCH PANEL PORTS AND MDF/IDF ROOM NUMBERS PER ANSI/TIA-607B AND OWNER STANDARDS.

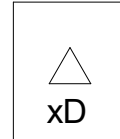
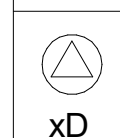
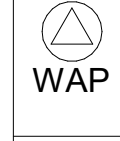


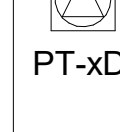
IT DRAWINGS INDEX

T0.000	TELECOM INDEX
T1.101	TELECOM PLAN - LEVEL 01
T1.201	TELECOM REFLECTED CEILING PLAN - LEVEL 01
T4.001A	ENLARGED IDF
T5.000	TELECOM DETAILS

COMMUNICATIONS PATHWAYS

1. VERIFY CABLE J-HOOKS PATHWAY ROUTING PRIOR TO INSTALLATION OF HORIZONTAL CABLES TO ENSURE ABLE PATHWAY DOES NOT CAUSE CABLE LENGTHS TO EXCEED MAXIMUM DISTANCE.
2. BACK BOXES INSTALLED FOR COMMUNICATIONS DATA AND VOICE WIRING TERMINATION SHALL BE 4 11/16"X4 11/16"X2.5" DEEP BOXES TO ALLOW FOR THE REQUIRED WORKING CLEARANCE OF THE UTP CABLE.
3. INSTALL SINGLE GANG MUD RINGS ON ALL COMMUNICATIONS WALL BOXES.
4. CONDUITS TO COMMUNICATIONS WALL BOXES SHALL BE MINIMUM OF 1" DIAMETER AND SHALL BE COMPLETE WITH NYLON PULL STRING.
5. PROVIDE CABLE J-HOOKS RATED FOR SUPPORTING SPECIFIED CATEGORY DATA CABLING THAT IS NOT IN CONDUIT. COORDINATE WITH GC ON CABLE PATHS PRIOR TO INSTALLATION OF CABLING.
6. DO NOT EXCEED MANUFACTURERS OR NEC MAXIMUM RECOMMENDED FILL RATIO FOR ANY GIVEN PATHWAY.
7. SUPPLY SOLUTIONS AND SHOP DRAWINGS SUBMITTALS FOR CONDUIT SEALING MATERIALS AND SYSTEMS. ENSURE SYSTEMS ARE INSTALLED PER MANUFACTURERS UL LISTING .
8. PROPERLY FIRE STOP ALL TELECOM PATHWAY CONDUITS AND UNUSED "TELECOM INTENDED USE CONDUITS" PRIOR TO SUBSTANTIAL COMPLETION.
9. INSTALL CONDUIT RUNS WITH NO MORE THAN TWO (2) 90 DEG. BENDS AND NOT EXCEED 100 FEET. IF THESE CONDITIONS CAN NOT BE MET, J-BOX MUST BE PLACED IN THE RUN, WITH THE ABILITY TO ACCESS BOX THROUGH THE CEILING.
10. CONDUITS SHALL HAVE CONNECTORS, PROTECTIVE BUSHINGS, AND PULL STRINGS AND SHALL BE GROUNDED.
11. COORDINATE WITH ARCHITECT AND OWNER ON ENTRY, PATHWAYS AND OUTLET BOX PLACEMENT IN MODULAR FURNITURE AND CUSTOM MILLWORK.
12. ADHERE TO COMMERCIAL BUILDING STANDARD FOR TELECOMMUNICATIONS PATHWAYS SET FOURTH IN ANSI-TIA 569-E STANDARD.
13. PROVIDE CONDUIT FROM EACH OUTLET BOX TO ACCESSIBLE CEILING. OUTLETS IN OPEN OR NON-ACCESSIBLE CEILINGS SHALL HAVE CONDUIT ROUTED TO THE NEAREST ACCESSIBLE CEILING OR CORRIDOR TRAY PATHWAY.
14. CONDUIT RUNS THAT HAVE AN INTERNAL DIAMETER OF 2" OR LESS SHALL HAVE A BEND RADIUS SIX (6) TIMES THE INTERNAL CONDUIT RADIUS. IF CONDUIT RUNS HAS AN INTERNAL DIAMETER OF 2" OR MORE IT SHALL HAVE A BEND RADIUS TEN (10) TIMES THE INTERNAL CONDUIT RADIUS.
15. PROVIDE LONG RADIUS BENDS ON ALL 90 DEGREE TURNS. UTILIZE 45 DEGREE BENDS WHEN POSSIBLE AND PROVIDE ADDITIONAL PULL BOXES AS NEEDED TO ELIMINATE STRESS ON CABLE.
16. CONDUIT "SLEEVES" ARE REQUIRED FOR CABLE INGRESS/EGRESS IN ROOMS WHOSE WALLS EXTEND TO DECK (I.E FIREWALL, SOUND ABSORPTION, ETC) SLEEVE TO BE A MINIMUM 2" TO MAINTAIN A 30% FILL RATIO. COORDINATE SLEEVE SIZE REQUIREMENTS BASED ON CABLE TYPE BEING INSTALLED.
17. MARK WITH PERMANENT INK ALL WALL BOXES AND CONDUITS THAT ARE TO BE USED FOR DATA COMMUNICATIONS WITH THE WORD "DATA".
18. CORRIDOR TRAYS MUST HAVE CONTINUOUS RAIL SIDES.
19. PROVIDE CORRIDOR TRAYS WITH SLEEVED ACCESS THROUGH WALLS ALONG THE ROUTE.
20. INSTALL CORRIDOR TRAYS WITH MANUFACTURER APPROVED TRANSITIONS AND TURNS.
21. A MINIMUM OF 12" INCHES CLEARANCE MUST BE PROVIDED ABOVE THE TOP OF THE OVERHEAD TRAY.
22. PROVIDE MATERIALS, COMPONENTS, TOOLS, AND LABOR TO COMPLETE COMMUNICATIONS CABLING PATHWAY, ELECTRICAL POWER DISTRIBUTION AND GROUNDING SYSTEM AS SHOWN IN THE DIVISION 26 AND 27 DOCUMENTS.

TELECOM SYMBOLS LEGEND

	WALL MOUNTED DATA OUTLET (D). MOUNT AT +18" AFF UNLESS NOTED OTHERWISE. (X) = QUANTITY OF CABLES PER LOCATION UNLESS NOTED OTHERWISE. REFER TO 271500 SPECIFICATION SECTION FOR CABLE AND OUTLET TYPE.
	CEILING MOUNTED DATA OUTLET (D). (X) = QUANTITY OF CABLES PER LOCATION. REFER TO 271500 SPECIFICATION SECTION FOR CABLE AND OUTLET TYPE.
	CEILING MOUNTED WIRELESS ACCESS POINT DATA OUTLET (WAP). ONE (1) CATEGORY CABLE PER LOCATION. REFER TO 271500 SPECIFICATION SECTION FOR CABLE AND OUTLET TYPE.
	WALL MOUNTED DATA OUTLET FOR FLAT SCREEN DISPLAY (TV). (X) = QUANTITY OF CABLE PER LOCATION. TERMINATE TO DISPLAY BACKBOX. REFER TO AV DRAWINGS FOR FINAL LOCATION AND 271500 SPECIFICATION SECTION FOR CABLE AND OUTLET TYPE.
	CEILING MOUNTED DATA OUTLET FOR FLAT SCREEN DISPLAY (TV). (X) = QUANTITY OF CABLE PER LOCATION. TERMINATE TO DISPLAY BACKBOX. REFER TO AV DRAWINGS FOR FINAL LOCATION AND 271500 SPECIFICATION SECTION FOR CABLE AND OUTLET TYPE.
	FLOOR POKE THRU DEVICE (PT) (X) = QUANTITY OF CABLES PER LOCATION. REFER TO 271500 SPECIFICATION SECTION FOR CABLE AND OUTLET TYPE. WHEN LOCATED UNDER MODULAR FURNITURE, TERMINATE CABLES IN FURNITURE ASSEMBLY

ABBREVIATIONS

AFF	ABOVE FINISHED FLOOR
AP	ACCESS PANEL
AWG	AMERICAN WIRE GAUGE
CATV	COMMUNITY ANTENNA TELEVISION
CON	CONDUCTOR
DB	DECIBEL
DEMARC	DEMARICATION POINT
EMT	ELECTRIC METALLIC TUBING
ER	EQUIPMENT ROOM
GC	GENERAL CONTRACTOR
HH	HANDHOLE
IDF	INTERMEDIATE DISTRIBUTION FRAME
IO	INFORMATION OUTLET
IRC	INTERMEDIATE RIGID CONDUIT
ISP	INTERNET SERVICE PROVIDER
LAN	LOCAL AREA NETWORK
MDF	MAIN DISTRIBUTION FRAME
MH	MAINTENANCE HOLE
MM	MULTIMODE
OCF	OUTSIDE CABLE PLANT
OFOI	OWNER FURNISHED OWNER INSTALLED
OTDR	OPTICAL TIME DOMAIN REFLECTOMETER
PB	PULL BOX
PBB	PRIMARY BONDING BUSBAR
PBX	PRIVATE BRANCH EXCHANGE
PR	PAIR
PVC	POLYVINYL CHLORIDE
RBB	RACK BONDING BUSBAR
RF	RADIO FREQUENCY
RMC	RIGID METAL CONDUIT
SBB	SECONDARY BONDING BUSBAR
SM	SINGLEMODE
SP	SERVICE PROVIDER
STP	SHIELDED TWISTED PAIR
TB	TERMINAL BLOCK
TBB	TELECOMMUNICATIONS BONDING BACKBONE
TBC	TELECOMMUNICATIONS BONDING CONDUCTOR
TR	TELECOM ROOM
TS	TRADE SIZE
UPS	UNINTERRUPTIBLE POWER SUPPLY
UTP	UNSHIELDED TWISTED PAIR
WAP	WIRELESS ACCESS POINT

IT RESPONSIBILITY MATRIX

TELECOM RESPONSIBILITY MATRIX	GC	IT CONTRACTOR	OWNER
NETWORK CABLING TO IDF'S		X	
CONDUITS	X		
J-BOXES	X		
POWER	X		
FLOOR BOXES/POKE-THRU'S	X		
DISPLAY BACK BOXES/BACKING	X		
ACCESS PANELS	X		
IDF/MDF BUILDOUT - RACKS, CABLE TRAY, PATCH PANELS, PATCH CORDS, GROUNDING		X	
DATA SWITCHES			X - (OFOI)
WIRELESS ACCESS POINT			X - (OFCI)
RACK MOUNTED UPS			X - (OFOI)
J-HOOK PATHWAY FOR DATA... COMPUTERS		X	X



2801 Technology Forest Blvd.  
The Woodlands, TX 77381

Gensler

909 Fannin St.  
Suite 200  
Houston, TX 77010  
United States

Tel 713.844.0000  
Fax 713.844.0001

#DBR

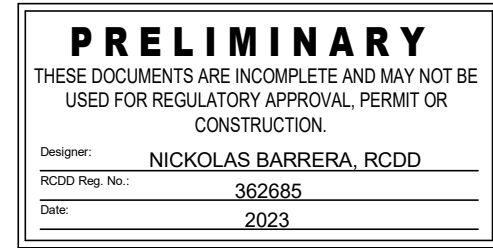
DBR Inc.  
9990 Richmond Ave.  
South Building, Suite 300  
Houston, TX 77042  
Tel 713.914.0888  
Fax www.dbrinc.com



4B Technology  
390 Glenborough Dr.  
Houston, TX 77067  
Tel 832.249.9379

Date	Description
08.31.2023	ISSUE FOR BID, PERMIT & CONSTRUCTION

Seal / Signature



08/31/23

Project Name  
Woodlands Township - Office Renovation

Project Number  
02.9171.000

Description  
TELECOM INDEX

Scale  
NOT TO SCALE

T0.000

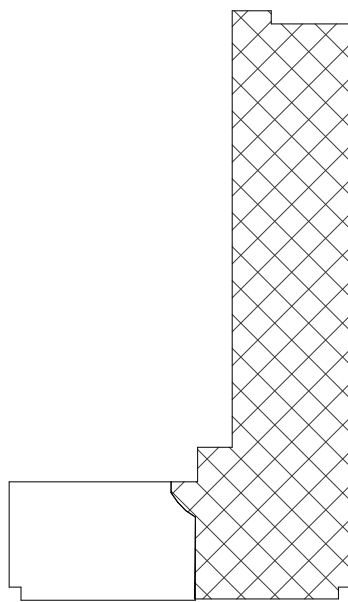




GENERAL NOTES:

1. DATA IN RENOVATION AREA WILL ROUTE BACK TO NEWLY INSTALLED COMMUNICATIONS RACK IN EXISTING IT ROOM 820.
2. COMMUNICATIONS CONTRACTOR IS TO UTILIZE EXISTING CABLE TRAY AS THE PRIMARY PATHWAY AND INSTALL SECONDARY SUPPORTS AS NEEDED TO THE WORKSTATION. REFERENCE REFLECTIVE CEILING PLAN SHEET T1.201.
3. OPEN CEILING CABLES AND CABLE SUPPORTS SHALL BE PROVIDED BY MEANS THAT IS STRUCTURALLY INDEPENDENT OF THE THE SUSPENDED CEILING, ITS FRAMEWORK, OR SUPPORTS. THESE SUPPORTS SHALL BE SPCAED NO MORE THAN 5FT APART.

KEYNOTES	
1	STEELCASE CONNECTRAC UNDERCARPET CABLE MANAGEMENT TO UNDER TABLE PLUG (PROVIDED BY ELECTRICAL), PROVIDE DATA TO FEED TO TABLETOP. COORDINATE EXACT PORT PLACEMENT WITH THE CLIENT.
2	DATA WITHIN OPEN WORK AREA SHALL BE FURNITURE FED VIA POWER POLE. POWER POLE SYSTEM PROVIDED BY ELECTRICAL. ELECTRICAL AND DATA SHALL NOT SHARE THE SAME PATHWAY, DIVIDERS ARE REQUIRED. PROVIDE ADAPTER PANELS AND PLATES AS NEEDED FOR TERMINATIONS AT FURNITURE. COORDINATE WITH FURNITURE CONTRACTOR FOR EXACT LOCATIONS.
3	DATA FOR PRINTER/COPIER. COORDINATE EXACT LOCATION WITH EQUIPMENT.
4	DATA AT WORKSTATIONS ARE TO BE FURNITURE FED. COORDINATE PATHWAY AND EXACT LOCATION WITH FURNITURE CONTRACTOR.



2801 Technology Forest Blvd.  
The Woodlands, TX 77381

Gensler

909 Fannin St.  
Suite 200  
Houston, TX 77010  
United States

Tel 713.844.0000  
Fax 713.844.0001

\*DBR

DBR Inc.  
9990 Richmond Ave.  
South Building, Suite 300  
Houston, TX 77042  
Tel 713.914.0888  
Fax www.dbrinc.com



4B Technology  
390 Glenborough Dr.  
Houston, TX 77067  
Tel 832.249.9379

Date	Description
08.31.2023	ISSUE FOR BID, PERMIT & CONSTRUCTION

FOR REFERENCE/ DESIGN INTENT ONLY.

Seal / Signature

<b>PRELIMINARY</b>	
THESE DOCUMENTS ARE INCOMPLETE AND MAY NOT BE USED FOR REGULATORY APPROVAL, PERMIT OR CONSTRUCTION.	
Designer:	NICHOLAS BARRERA, RCDD
RCDD Reg. No.:	362665
Date:	2023

08/31/23

Project Name	Woodlands Township - Office Renovation
Project Number	02.9171.000
Description	TELECOM PLAN - LEVEL 01

Scale	1/8" = 1'-0"
-------	--------------

T1.101





2801 Technology Forest Blvd.  
The Woodlands, TX 77381

Gensler

909 Fannin St.  
Suite 200  
Houston, TX 77010  
United States  
Tel 713.844.0000  
Fax 713.844.0001

\*DBR

DBR Inc  
9990 Richmond Ave  
South Building, Suite 300  
Houston, TX 77042  
Tel 713.914.0888  
Fax www.dbrinc.com

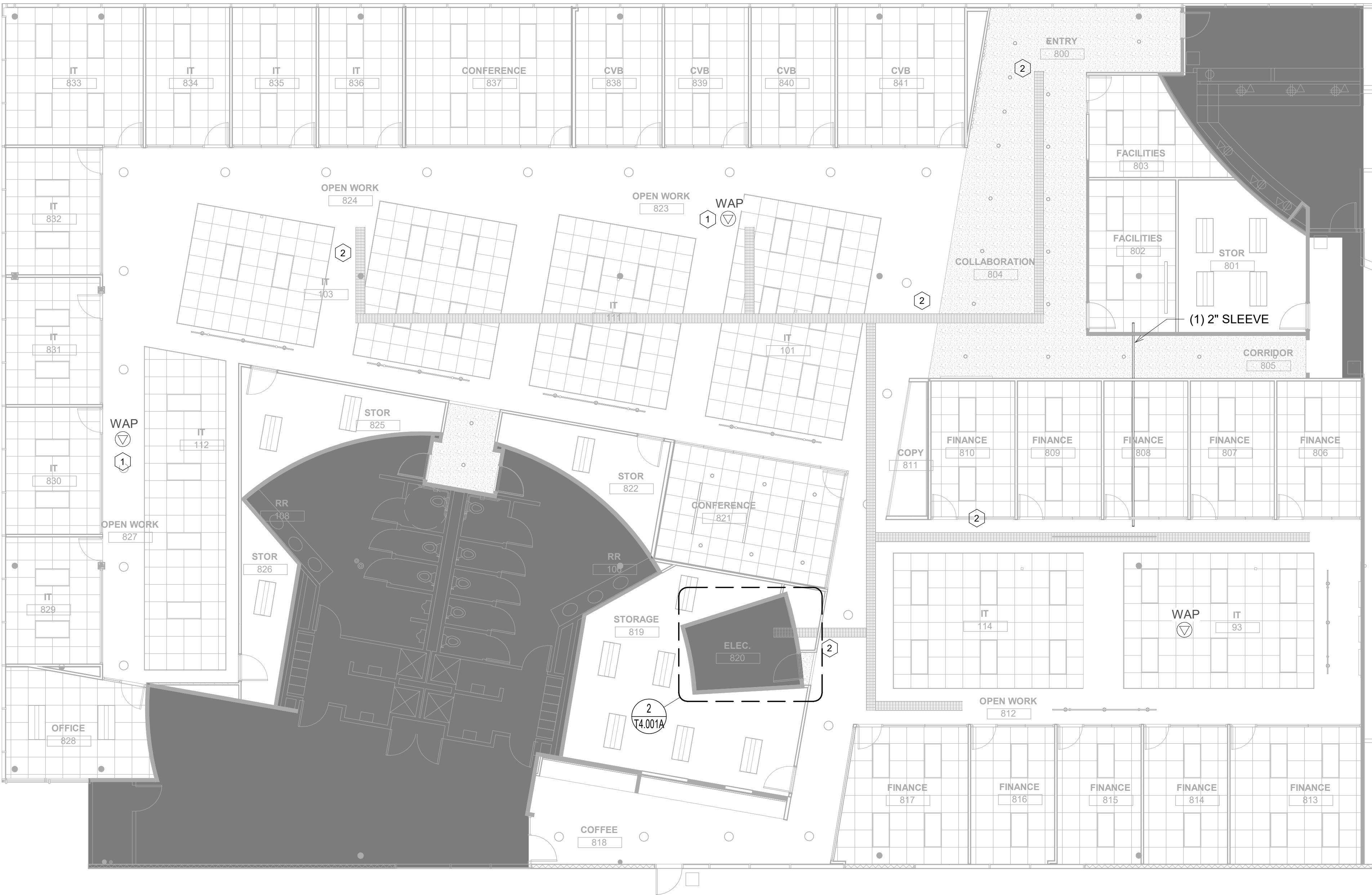


4B Technology  
390 Glenborough Dr.  
Houston, TX 77067  
Tel 832.249.9379

GENERAL NOTES:

- 1. DATA IN RENOVATION AREA WILL ROUTE BACK TO NEWLY INSTALLED COMMUNICATIONS RACK IN EXISTING IT ROOM 820.
- 2. COMMUNICATIONS CONTRACTOR IS TO UTILIZE EXISTING CABLE TRAY AS THE PRIMARY PATHWAY AND INSTALL SECONDARY SUPPORTS AS NEEDED TO THE WORKSTATION. REFERENCE REFLECTIVE CEILING PLAN SHEET T1.201.
- 3. OPEN CEILING CABLES AND CABLE SUPPORTS SHALL BE PROVIDED BY MEANS THAT IS STRUCTURALLY INDEPENDENT OF THE THE SUSPENDED CEILING, ITS FRAMEWORK, OR SUPPORTS. THESE SUPPORTS SHALL BE SPCAED NO MORE THAN 5FT APART.

KEYNOTES	
1	UTILIZE EXISTING CABLE ABOVE THE CEILING FOR WAP
2	EXISTING OVERHEAD CABLE TRAY (SOLID)



Date	Description
08.31.2023	ISSUE FOR BID, PERMIT & CONSTRUCTION

FOR REFERENCE/ DESIGN INTENT ONLY.

Seal / Signature

PRELIMINARY

THESE DOCUMENTS ARE INCOMPLETE AND MAY NOT BE USED FOR REGULATORY APPROVAL, PERMIT OR CONSTRUCTION.

Design:

RECD Proj. No.:

Date:

NICKOLAS BARRERA, RCDD

362665

2023

08/31/23

Project Name

Woodlands Township - Office Renovation

Project Number

02.9171.000

Description

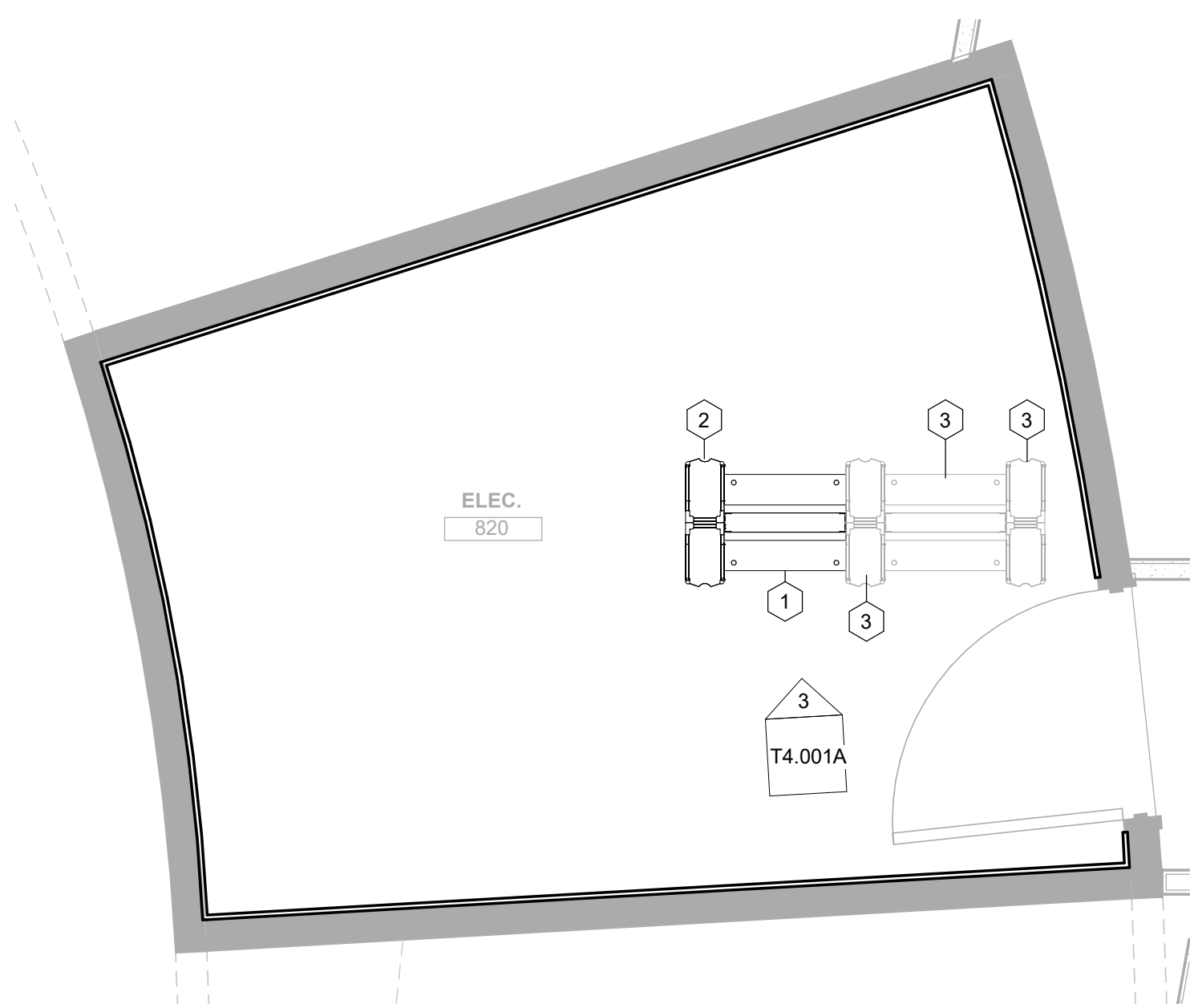
TELECOM REFLECTED CEILING PLAN - LEVEL 01

Scale

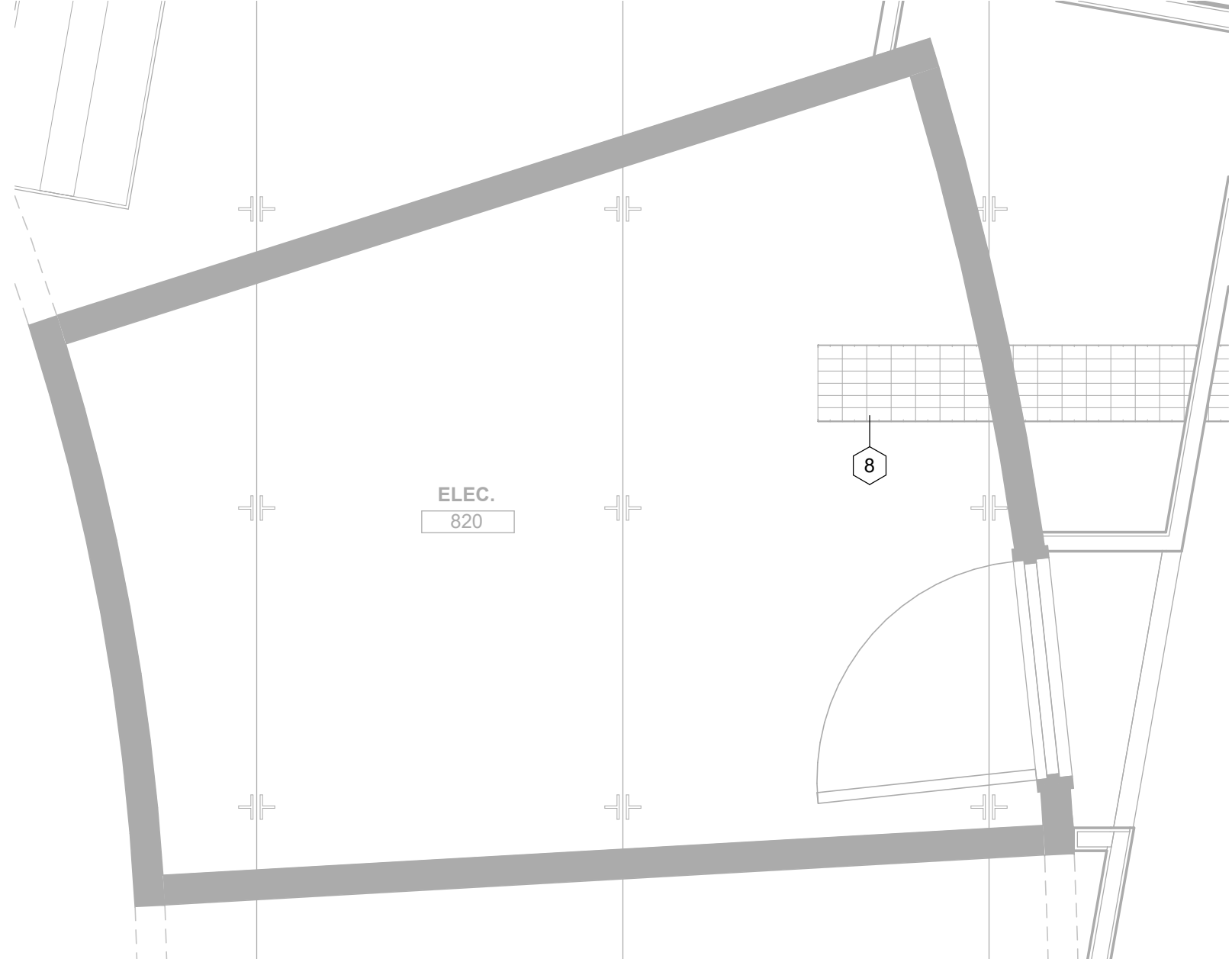
1/8" = 1'-0"

T1.201

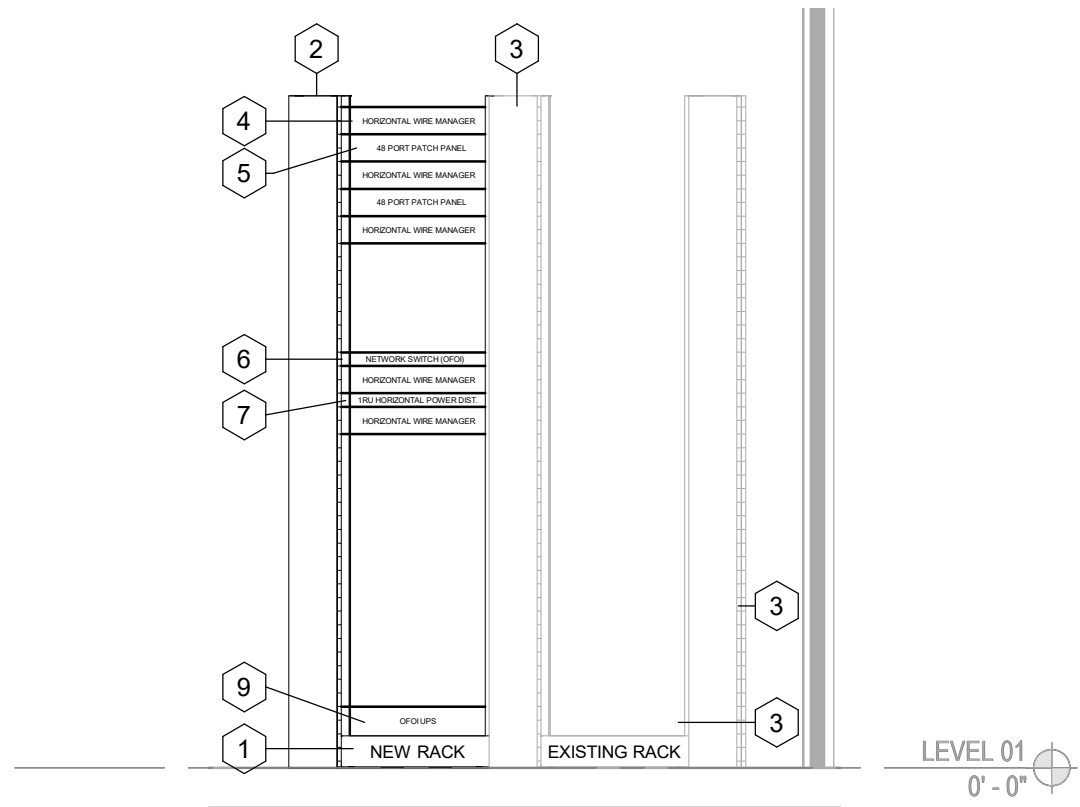




1 TELECOM PLAN - LEVEL 01 - ELECTRICAL RM 820  
SCALE: 1/2" = 1'-0"



2 TELECOM REFLECTED CEILING PLAN - LEVEL 01 - ELECTRICAL RM 820  
SCALE: 1/2" = 1'-0"



3 DATA ROOM EQUIPMENT RACK ELEVATION  
SCALE: 1/2" = 1'-0"



4 DATA ROOM EQUIPMENT RACK - EXISTING CONDITIONS  
SCALE: NTS



5 EXISTING OVERHEAD CABLE TRAY (SOLID)  
SCALE: NTS



6 LOCATION FOR NEW EQUIPMENT RACK  
SCALE: NTS



- GENERAL NOTES:**
- TELECOM ROOM LAYOUTS AND EQUIPMENT ARE SHOWN FOR COORDINATION AND INFORMATION PRUPOSES ONLY.
  - GRAPHIC REPRESENTATION OF PATCH PANELS DO NOT REPRESENT EXACT QUANTITIES. CONTRACTOR SHALL PROVIDE SUFFICIENT QUANTITIES FOR ALL CABLING, PLUS 20%.
  - EXISTING ACTIVE IT EQUIPMENT AND COMPONENTS MUST BE FREE OF DUST AND LIQUIDS. EXTREME PROTECTION IS MANDATORY DURING RENOVATIONS.

KEYNOTES	
1	19" EQUIPMENT RACK
2	6" VERTICAL WIRE MANAGER
3	EXISTING RACK AND EXISTING VERTICAL WIRE MANAGERS HOUSING ACTIVE EQUIPMENT
4	2RU HORIZONTAL WIRE MANAGER
5	48 PORT FLAT PATCH PANEL
6	NETWORK SWITCH (OFOI)
7	1RU HORIZONTAL POWER DISTRIBUTION
8	EXISTING OVERHEAD CABLE TRAY (SOLID)
9	UPS (OFOI)



2801 Technology Forest Blvd.  
The Woodlands, TX 77381

**Gensler**

909 Fannin St.  
Suite 200  
Houston, TX 77010  
United States

Tel 713.844.0000  
Fax 713.844.0001

**\*DBR**

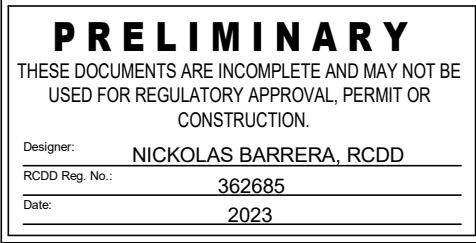
DBR Inc.  
9990 Richmond Ave.  
South Building, Suite 300  
Houston, TX 77042  
Tel 713.914.0888  
Fax www.dbrinc.com



4B Technology  
390 Glenborough Dr.  
Houston, TX 77067  
Tel 832.249.9379

Date	Description
08.31.2023	ISSUE FOR BID, PERMIT & CONSTRUCTION

Seal / Signature

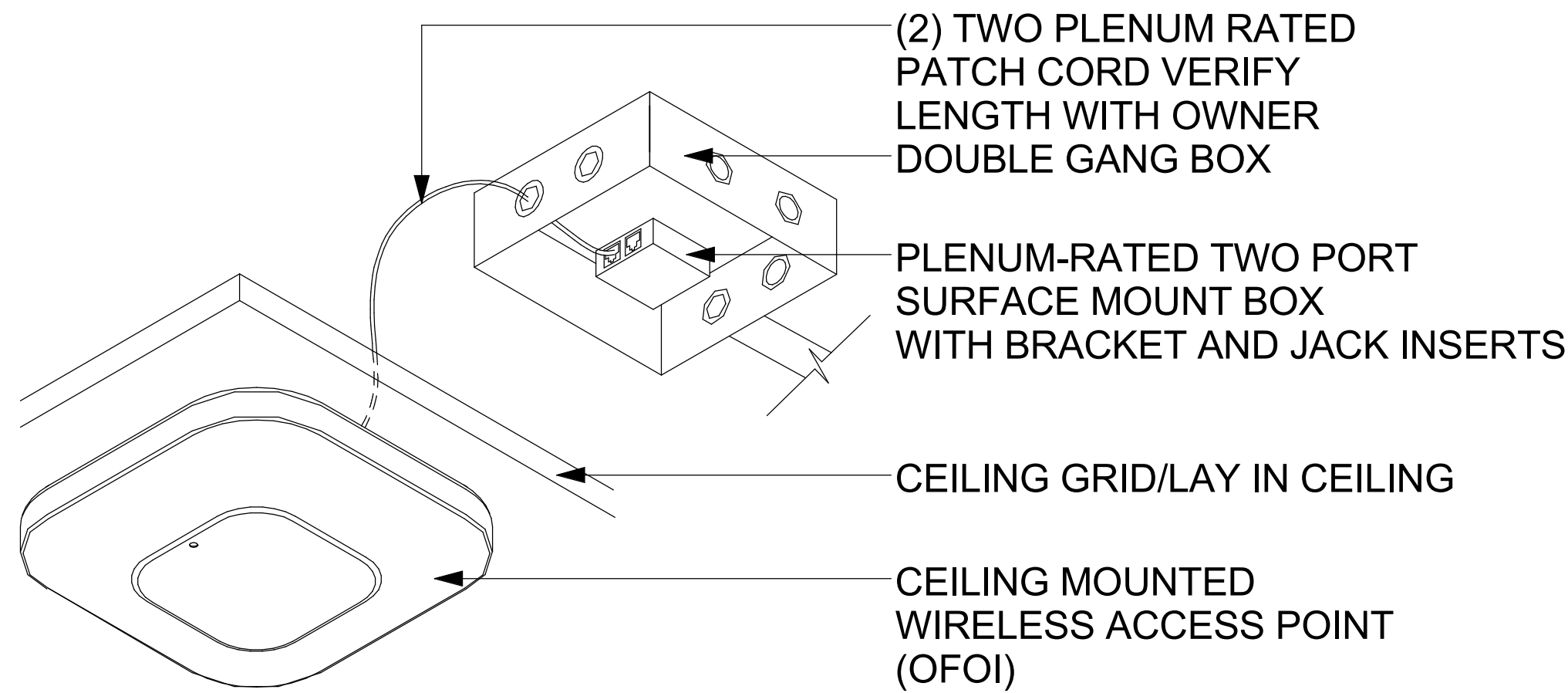


08/31/23

Project Name  
Woodlands Township - Office Renovation  
Project Number  
02.9171.000  
Description  
ENLARGED IDF

Scale  
NOT TO SCALE

**T4.001A**



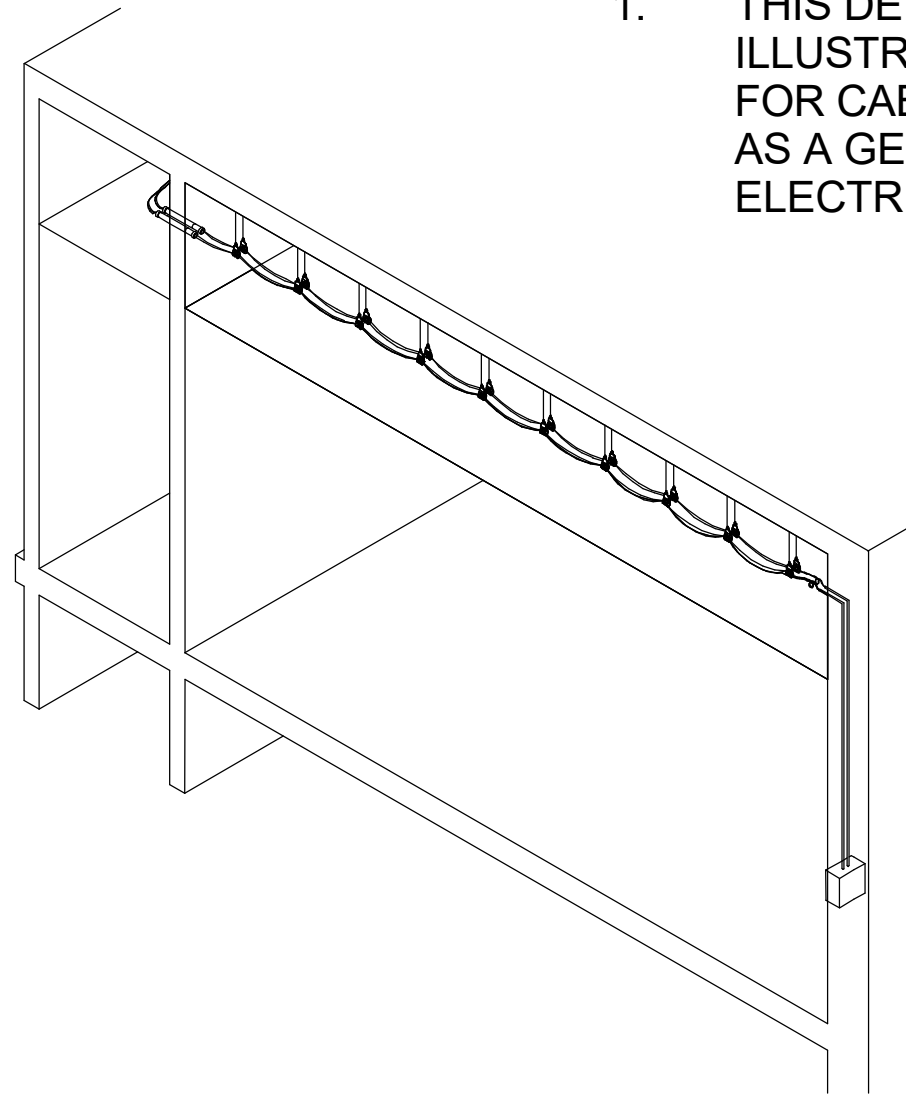
1 WIRELESS ACCESS POINT (WAP) ROUGH-IN DETAIL  
SCALE: NTS

**GENERAL NOTES:**

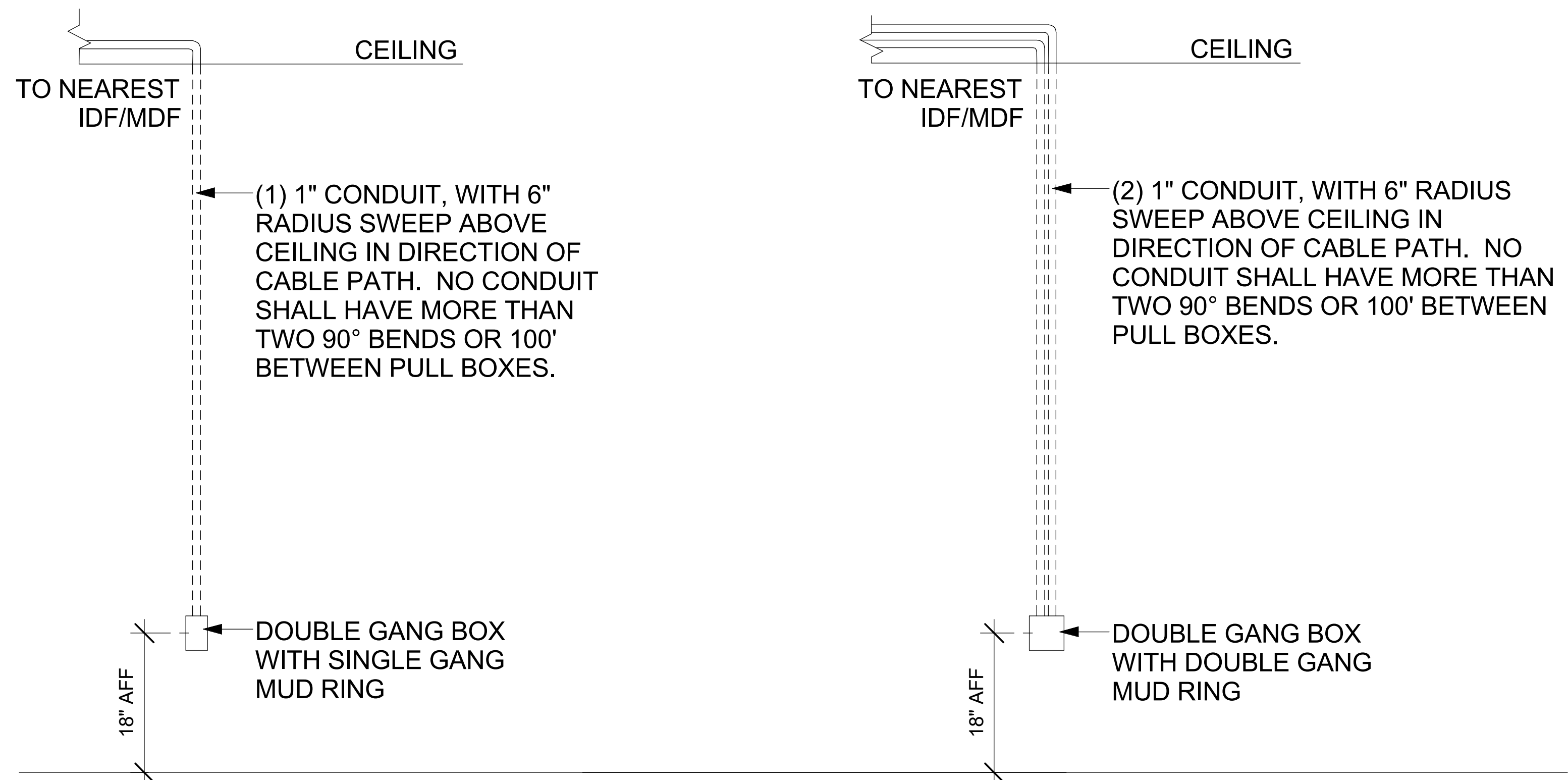
1. A MINIMUM OF ONE CONTINUOUS RUN OF CONDUIT SHALL BE PLACED FROM I/O TO ACCESSIBLE CEILING SPACE.
2. ALL CONDUIT SHALL BE MIN: 1"Ø, HAVE PROTECTIVE BUSHING, AND PULL STRINGS.
3. NO CABLE SHALL BE PLACED IN CONDUIT THAT DOES NOT HAVE PROTECTIVE INSULATING BUSHING PRESENT.
4. CONTRACTOR SHALL REPORT ANY DEVIATIONS FROM THIS OR ANY STANDAEAD TO THE GENERAL CONTRACTOR FOR REFIT BY RESPONSIBLE CONTRACTOR.

**NOTES:**

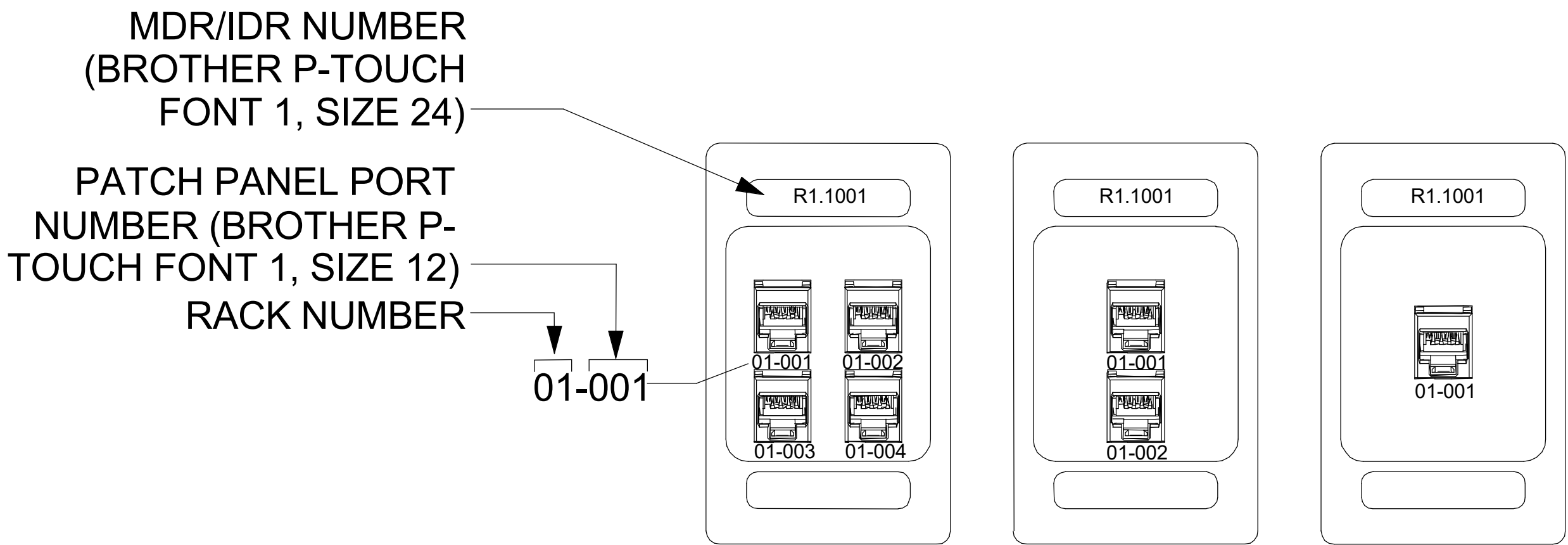
1. THIS DETAIL IS INTENDED TO ILLUSTRATE CABLE ROUTING FOR CABLE CONTRACTOR AND AS A GENERAL GUIDE FOR ELECTRICAL CONTRACTOR.



2 PATHWAY DETAIL  
SCALE: NTS



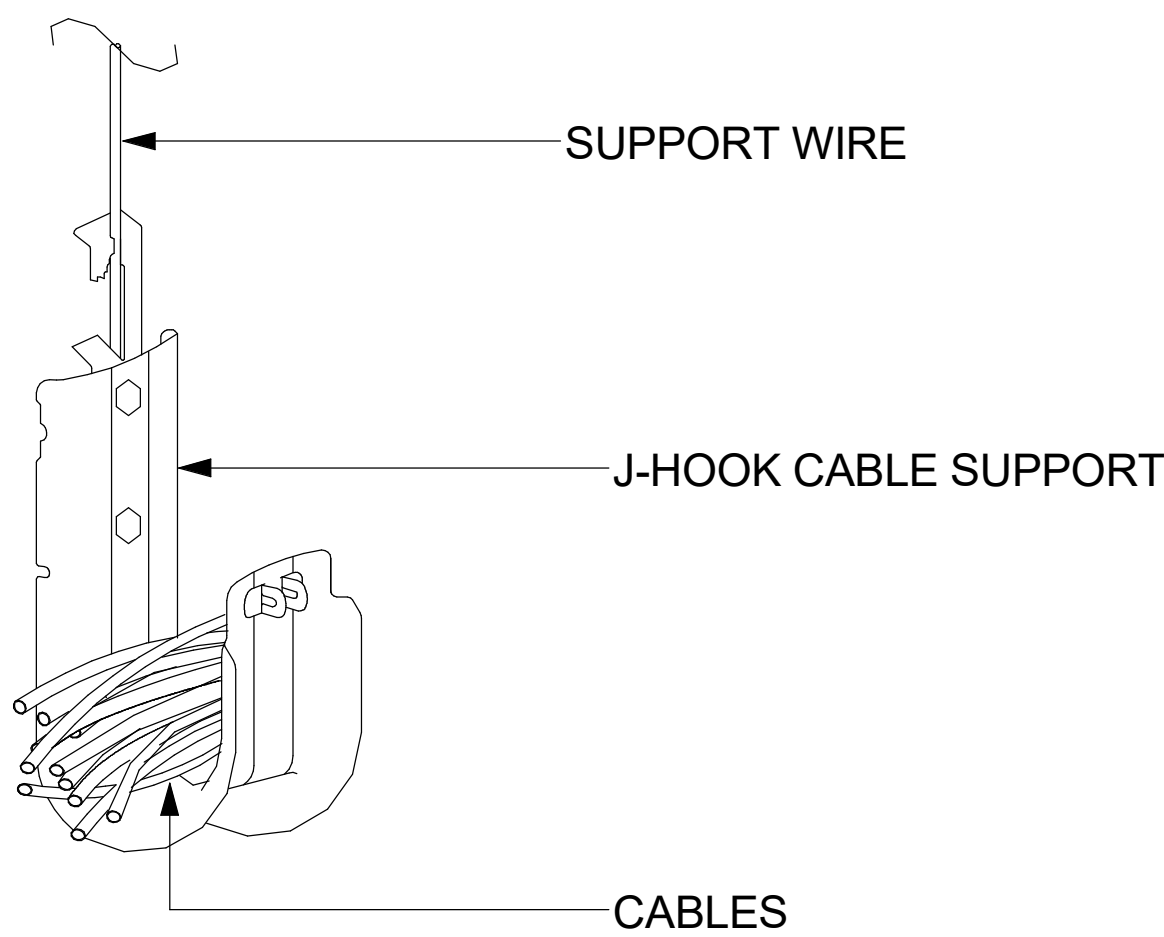
3 DATA OUTLET ROUGH IN  
SCALE: NTS



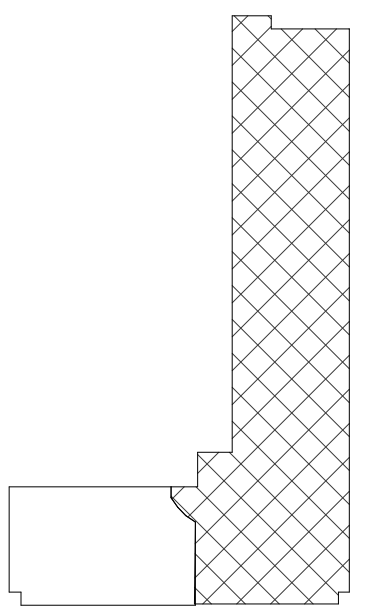
4 FACEPLATES 1-PORT, 2-PORT, AND 4-PORT LABELING SCHEME  
SCALE: NTS

**NOTE:**

-J-HOOKS MAY BE USED IN ABOVE LAY-IN TILE CEILINGS. SPACE J-HOOK'S EVERY 3FT -5FT.



5 J-HOOK DETAIL  
SCALE: NTS



2801 Technology Forest Blvd.  
The Woodlands, TX 77381

**Gensler**

909 Fannin St.  
Suite 200  
Houston, TX 77010  
United States

Tel 713.844.0000  
Fax 713.844.0001

**\*DBR**

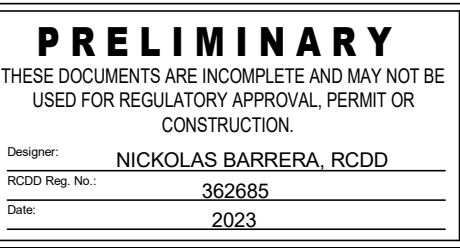
DBR Inc.  
9990 Richmond Ave.  
South Building, Suite 300  
Houston, TX 77042  
Tel 713.914.0888  
Fax www.dbrinc.com



4B Technology  
390 Glenborough Dr.  
Houston, TX 77067  
Tel 832.249.9379

Date	Description
08.31.2023	ISSUE FOR BID, PERMIT & CONSTRUCTION

Seal / Signature



08/31/23

Project Name  
Woodlands Township - Office Renovation  
Project Number  
02.9171.000  
Description  
TELECOM DETAILS

Scale  
NOT TO SCALE

**T5.000**